

Performance of Organic Rankine Cycle in Different Refrigerants for Low Temperature Geothermal using Delphi Program

Prabowo, Andre G.T., Eka Dewi

Department of Mechanical Engineering, ITS, Surabaya

E-mail: prabowo@me.its.ac.id

ABSTRACT

A software has been developed in a Windows-based Delphi programming for analyzing the influence of the transport and thermodynamic properties of the refrigerants on the performance of the Organic Rankine Cycle (ORC). Its user-friendly drag and drop icon format and excellent color graphics make it an interactive tool for teaching and the preliminary design of the ORC system. The research was carried out by analyzing the performance of the system components and the overall ORC based on the several working fluids within R22, R123, R134a and RC318. The pressure of evaporator was varied in two steps 7 and 12 bar, while the condenser was kept constant pressure at 1 bar. The turbine inlet temperature was varied in the range 100 °C to 140 °C where the various isentropic efficiency inputs were applied for pump and turbine. By increasing turbine inlet temperature, R22 has the highest turbine work output and cycle efficiency. Contrary, RC318 has the lowest cycle efficiency and decreases trend with enhancing in turbine inlet temperature. RC318 has low latent heat of vaporization thus vaporizes under relatively very low evaporator heat supply.

Keywords: Organic rankine cycle, delphi program, performance analysis.

INTRODUCTION

Geothermal heat sources vary in temperature from 50 to 300 °C, and can be superheated, mainly saturated steam or just a mixture of steam and water. Generally, the high temperature (>170 °C) and pressure (> 6 bar) are suitable for commercial production of electricity. In reality, however, only small number of geothermal wells can produce high temperature steam. In Mataloko-NTT east part of Indonesia, almost 50% of geothermal wells were producing steam in low temperature (< 150 °C) and became un-useful.

Organic Rankine Cycle (ORC) with refrigerant as working fluid are the most common technology for utilizing such low temperature resources for producing of electricity [1-3]. Like the Rankine cycle, the main components of this system consists of the evaporator, condenser, pump and turbine. This system requires only low temperature and pressure heat sources to produce vapor that turns the turbine to generate electricity and this system also does not require a furnace as the heating component which has pollution effects to the environment.

A regenerative cycle improves the efficiency of an ORC and reduces irreversibility when Pedro et al [4] use various classes of organic working fluid. The cycle power will increase by increasing the mass flow rate of geothermal steam entering the evaporator by mixing the steam from the source with a portion of

recirculated steam from the evaporator exit [5]. The effect of various working fluid on the thermal efficiency ORC has been investigated [6]. It is found that the presence of hydrogen bond in certain molecules such as water, ammonia and ethanol may result in larger vaporizing enthalpy, and is regarded as inappropriate for ORC system. Experimental study was also proposed to improve the thermal efficiency by using solar energy [7]. A displacement-type scroll expander and compound parabolic concentrator solar collector are used.

In this study, a user-friendly computer software was developed for analyzing the influence of the transport and thermodynamic properties of the refrigerants as working fluid on the ORC performance. The overall performance of the system in producing power; including the efficiency and turbine power output of the various refrigerants with change in enthalpy will also be discussed.

RESEARCH METHODOLOGY

Analysis of an ORC System

The schematic of the ORC system is shown in Figure 1. Low temperature heat sources (low grade geothermal energy) is passed through the evaporator heating the working fluid and is converted from liquid to a high pressure vapor. The vapor is used to drive a turbine and is changed into a low pressure vapor.

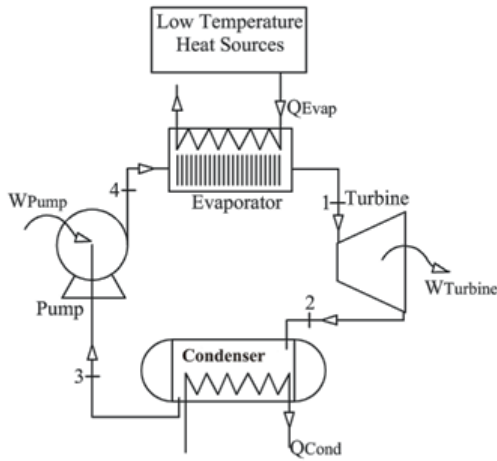


Figure 1. Schematic of the ORC System

In the same time, the thermal energy of the vapor is converted to mechanical power and will produce electricity if generator is connected to turbine shaft. The vapor leaving the turbine is then condensed at the condenser and pumped back to the evaporator. The working fluid then passes through a series of devices in a closed cycle.

By modeling each device, a complete cycle simulation is achieved. The simulation requires such condition as the turbine inlet pressure P_1 is changed in two steps 7 and 12 bars, besides that the turbine outlet pressure P_2 was kept constant at 1 bar. The turbine inlet temperature is set between 100 to 140 °C to be a superheated phase. The working fluid passing through the condenser is assumed to be a saturated liquid. The isentropic efficiencies of the turbine and pump are assumed to be 80%. In this simulation, each stage of the working fluid is expressed by the equation (1) to (6) [8]. The equations are used to determine the cycle efficiencies for basic ORC configurations are presented in this section. The thermodynamic model presented in this chapter assumes the following: 1) steady state conditions and 2) no pressure drop in the evaporator, condenser, and pipes.

Process 1-2 (Turbine)

The superheated vapor of the working fluid passes through the turbine to generate mechanical power. The vapor expands in the casing and it will drive the turbine blades. The vapor comes out of the turbine at lower pressure P_2 . The turbine power is given by:

$$h_1 - h_2 = \eta_T (h_1 - h_{2s}) \quad (1)$$

$$\frac{W_T}{\dot{m}} = h_1 - h_2 \quad (2)$$

Where η_T is the isentropic efficiency of the turbine, \dot{m} is the working fluid mass flow rate, h_1 is the specific enthalpy of the working fluid at the inlet turbine, h_{2s} and h_2 are the specific enthalpies outlet of the turbine for isentropic and actual process, respectively.

Process 2-3 (Condenser)

In the condenser, the superheated vapor of the working fluid goes through desuperheating and phase change (condensation) process at constant pressure into a state of saturated liquid. The condenser heat rejection rate is expressed as,

$$\frac{Q_{condenser}}{\dot{m}} = h_2 - h_3 \quad (3)$$

Process 3-4 (Pump)

The working fluid (saturated liquid) is leaving the condenser at low pressure P_3 and brought to high pressure P_4 by the pump. The working fluid is pumped back into the evaporator. The pump power can be expressed as,

$$\frac{W_p}{\dot{m}} = h_4 - h_3 = \frac{v_f (P_4 - P_3)}{\eta_p} \quad (4)$$

Where η_p is the isentropic efficiency of the pump, h_3 is the specific enthalpy of the working fluid at the inlet pump, h_{4s} and h_4 are the specific enthalpies of the working fluid at the outlet of the pump for the ideal and actual case, respectively.

Process 4-1 (Evaporator)

In the evaporator, the low temperature geothermal heats the working fluid from the pump outlet to the turbine inlet condition. Taking a control volume enclosing the evaporator, the heat transfer rate from the energy source into the working fluid is given by,

$$\frac{Q_{evaporator}}{\dot{m}} = h_1 - h_4 \quad (5)$$

Cycle efficiency

The cycle efficiency is defined as the ratio between the net power of the cycle to the evaporator heat rate. It gives a measure about how much of the waste heat input to the working fluid passing through the evaporator is converted to the net work output and can be expressed as,

$$\eta = \frac{\frac{W_T}{\dot{m}} - \frac{W_P}{\dot{m}}}{\frac{Q_{evaporator}}{\dot{m}}} \times 100\% \quad (6)$$

Organic Working Fluids

Table 1. Thermal Properties of Working Fluids

Working Fluid	Molecular Weight (gr/mol)	Critical Pressure (KPa)	Critical Temp. (°C)
R22	86.48	4988	96.1
R123	152.93	3668	183.9
R134a	102.03	4067	101.1
RC318	200.04	2781	115.8

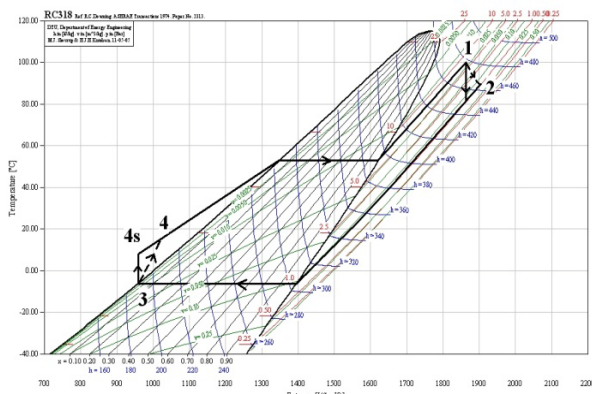
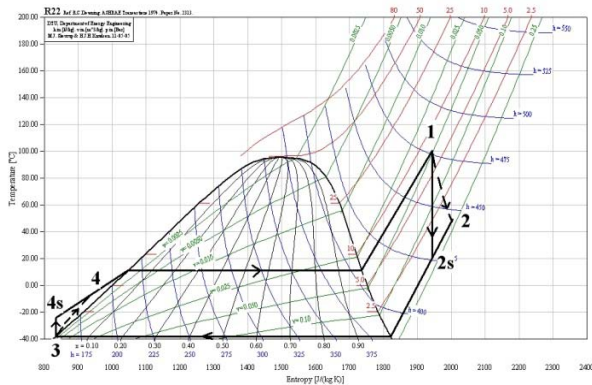


Figure 2. T-s Diagram for Working Fluid Considered

There are several criteria for the organic substance that was selected as the working fluid. Such as non ozone depletion, non toxicity, non corrosiveness and non flammability are a few physical and chemical characteristics [2]. Besides that, the working fluid should have relatively low boiling point to be used in a organic Rankine cycle, since low temperature geothermal was used as heat source. In a ORC design, however, not all the general requirements can be satisfied. Table 1 lists the thermal properties of these working fluids. R22 has the smallest molecular weight, this mean R22 has density smaller than the others. Contrary, RC318 has the biggest molecular weight, this mean using the same pump capacity, RC318 has the highest mass flow rate.

Figure 2a and b present T-s diagram for R22 and RC318, respectively [9]. The different of entropy

between saturated gas and saturated liquid (s_{fg}) represents big or small latent heat. In addition, a highest latent heat means the largest portion of the energy supplied is taken up during phase change at constant temperature and pressure. The working fluid, R22, has wider T-s than the other organic fluids, this is taking up more heat during evaporation. Contrary, RC318 has narrower T-s diagram, thus less heat during evaporation. The state condition of RC318 has always superheated vapor out from turbine even inlet turbine in saturated vapor condition.

Description of Software

A window-based Delphi programming have been created to determine the influences of the transport and thermodynamics properties including specific volume, viscosity, thermal conductivity, latent heat and enthalpy for different refrigerant in performance trend of ORC. Thermodynamics properties of common refrigerant where have been extracted from NIST [10], and then the database was built in the Delphi program using Microsoft Access format. The existing databases of refrigerant properties cater for R22, R123, R134a and RC318. These kinds of properties are automatically calculated based on input fluid temperatures and pressure in every stage.

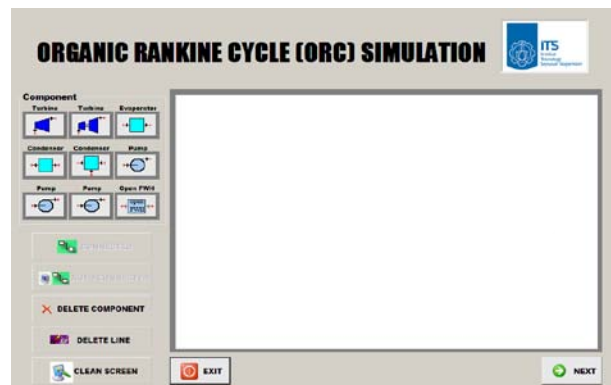


Figure 3. The Beginning Form

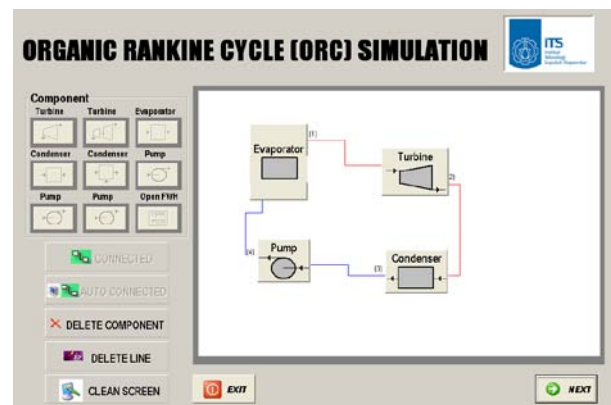


Figure 4. Design ORC System with Drag and Drop

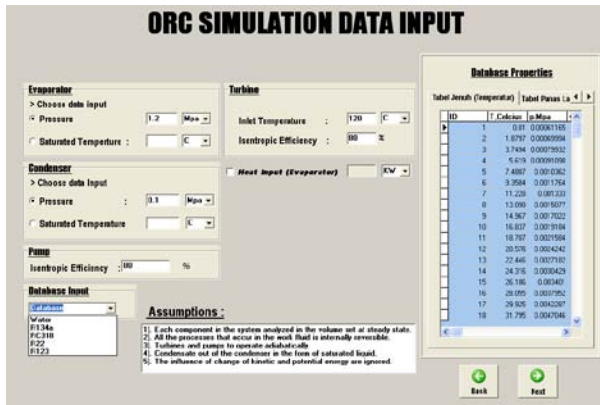


Figure 5. Input Format for Temperature, Pressure and Kind of Working Fluid

In simulation process, the software will display each components of the ORC system (turbine, reheat turbine, condenser, pump and evaporator) as shown in Figure 3 for the beginning form. Then, the user can drag the select components/icons and drop to the empty form. Connecting each component to make organic Rankine cycle system as shown in Figure 4. Some buttons such as connected, auto connected, delete line, delete component, clear screen have been prepared to operate this simulator easier for the preliminary design ORC system. Besides that, excellent color graphics features and attractive icon make it an interactive tool for teaching of ORC cycle. After finishing the design of ORC system, pressure and temperature will be inputted for each component like evaporator, turbine, condenser and pump as described in Figure 5. The SI units option pressure (bar or MPa) and temperature ($^{\circ}\text{C}$ or K) are built into the software. The various isentropic efficiencies for pump and turbine are included in the software. The user also can choose the kind of working fluid will be used.

RESULT AND DISCUSSION

Numerical Simulation Results

Based on data inputted by the user viz. temperature, pressure, isentropic efficiency and kind of working fluids, the software will automatically calculate the turbine work (W_T), pump work (W_P), heat input evaporator ($Q_{evaporator}$), heat rejection condenser ($Q_{condenser}$) all units in KJ/kg, cycle efficiency ($\eta\%$) and back work ratio (bwr) as described in Fig. 6. In the others form of the result, the simulator will displayed T-s diagram, thermodynamic properties and state of condition for working fluid in each stage as shown in Figure 7.

To see the effect of working fluids on the thermal performance ORC cycle under same temperature and pressure on each stage, the user must return to the input format data and change the

working fluid to other refrigerant. With the same procedure, the simulator will display the comparison of thermal performance for ORC in different working fluids as shown in Figure 8.

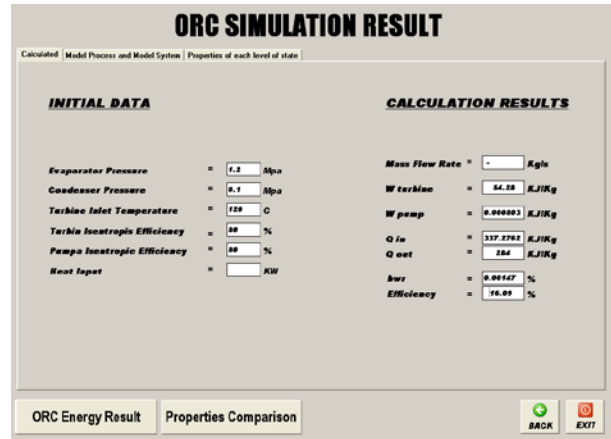


Figure 6. Calculation Results

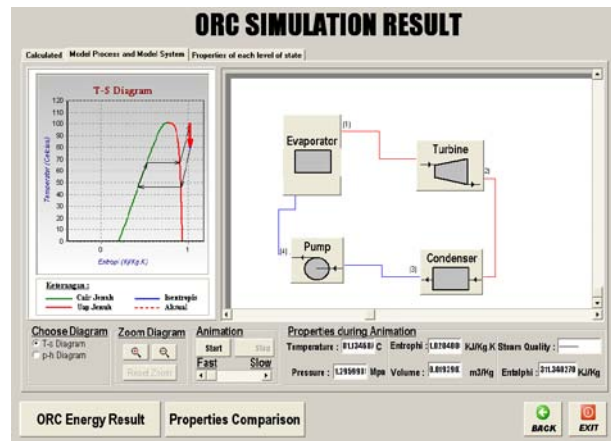


Figure 7. T-s Diagram and Model Process

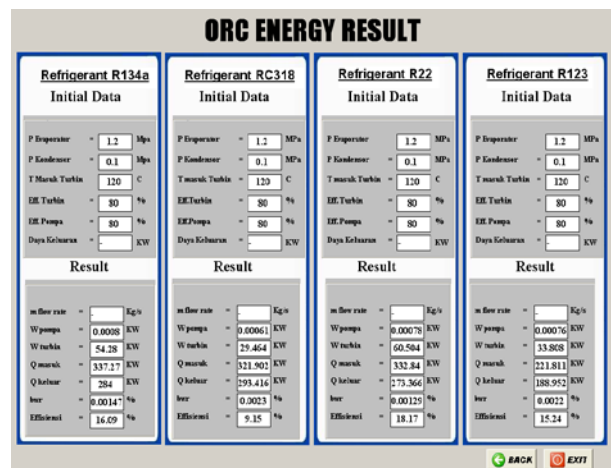
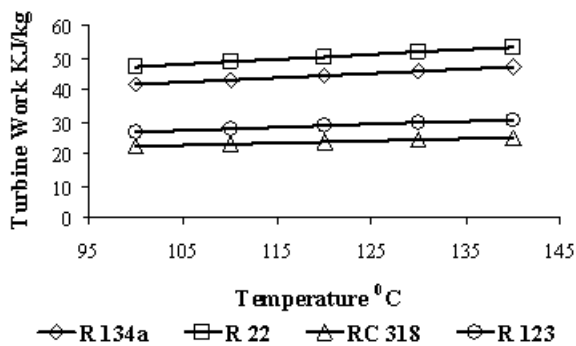


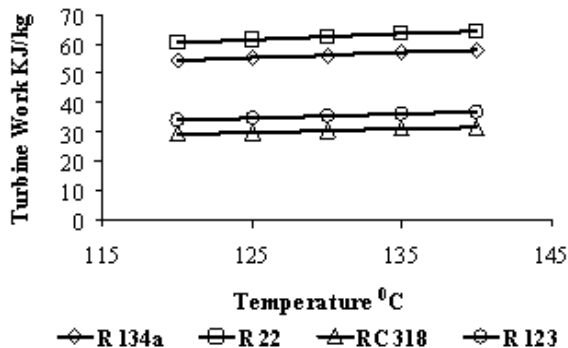
Figure 8. The Comparison of Thermal Performance for ORC in Different Working Fluids

Figure 9a and 9b show the dependence of the turbine work (KJ/kg) on the different turbine inlet temperature under superheated vapor condition for pressure 7 bar and 12 bar respectively, with constant pressure 1 bar at condenser. In the case of R22 and R134a at pressure 7 bar, the work turbine significantly increases with increase in the turbine inlet temperature. The work turbine is calculated by Equation (2) with the isentropic efficiency of the turbine is assumed to be 80%. As this equation, increasing the value of enthalpy inlet turbine will formulate the turbine work output become enlarge. For R123 and RC318, it only slightly increases and also the value of the turbine work output is small. The relationship the work turbine and the temperature inlet turbine is expressed as a straight line. For the evaporator pressure 12 bar, the turbine work has same tendency with Figure 9a only the value relatively higher than pressure 7 bar.

Figure 10a and b present the effect of the turbine inlet temperature on the cycle efficiency under superheated vapor condition for pressure 7 bar and 12 bar respectively, with constant pressure 1 bar at condenser.

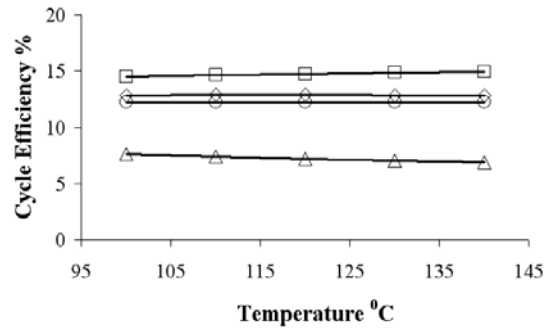


(a) Turbine Work vs Evap Temp (P=7 bar)

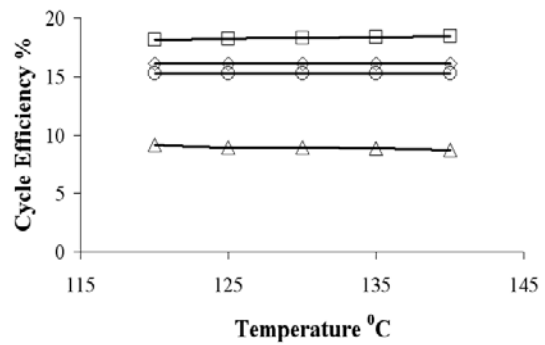


b) Turbine Work vs Evap Temp (P=12 bar)

Figure 9. The Effects of the Turbine Inlet Temperature on Turbine Work



(a) Cycle Efficiency vs Evap Temp (P=7 bar)



(b) Cycle Efficiency vs Evap Temp (P=12 bar)

Figure 10. The Effects of the Turbine Inlet Temperature on Cycle Efficiency

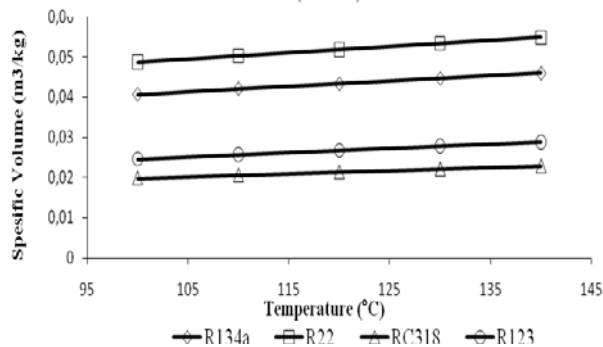
R22 has the highest cycle efficiency and increases trend with enhancing in the turbine inlet temperature. Therefore raising the temperature inlet turbine and pressure, give us much higher system performance. Inline with R22, R123 and R134a have also increase trend. Conversely, RC318 has lowest the cycle efficiency and decreases tendency for increasing turbine inlet temperature. Thus RC318 will give the best efficiency if it is operated at saturated vapor condition. For the pressure 12 bar Figure 10b, the cycle efficiency has same gradient with Fig. 10a only the value slightly higher than pressure 7 bar. These results, however, tell us the characteristics of each working fluid and the effect of the temperature inlet turbine.

Component Transport Properties Analysis

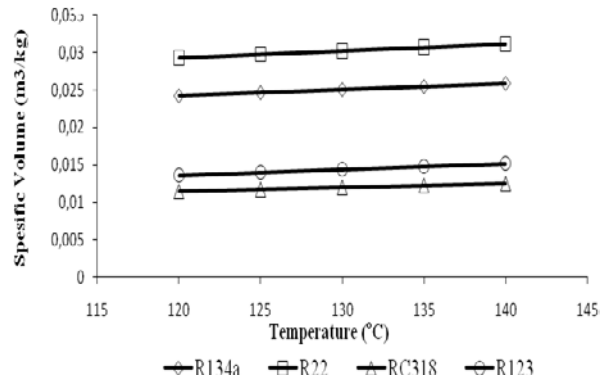
Figure 11 (a) and (b) show the effect of the turbine inlet temperature on specific volume of the working fluid for P = 7 bar and 12 bar respectively. In the case of each working fluid, the specific volume increases proportionally with increase in the turbine inlet temperature.

The working fluid, RC318, has the lowest specific volume and the value will enlarge in higher pressure $P=12$ bar. Because the vapor will expands in casing turbine to generate mechanical power, increasing the specific volume indicates an increase the turbine work.

Figure 12 shows the impact of evaporator pressure on the enthalpy of vaporization (h_{fg}). Almost all working fluids have same trend with decreasing latent heat of vaporization as the evaporator pressure increase. RC318 has the lowest enthalpy of vaporization thus vaporizes under relatively very low evaporator heat supply.



(a) Specific Volume vs Evaporator Temperature ($P=7$ bar)



(b) Specific Volume vs Evaporator Temperature ($P=12$ bar)

Figure 11. The Effects of the Turbine Inlet Temperature on Specific Volume of the Working Fluid

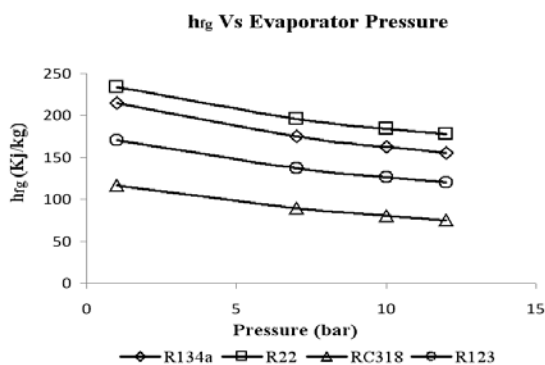


Figure 12. The Impact of the Evaporator Pressure on Enthalpy of Vaporization

CONCLUSION

A software developed using Delphi Program can be used for simulation and analysis of the effect of thermodynamic and transport properties of some working fluids, i.e. R22 (Chlorodifluoromethane), R123 (Dichlorotrifluoroethane), R134a (Tetrafluoroethane), and RC318 (Octafluorocyclobutane) on an Organic Rankine Cycle (ORC).

From the simulation, it was found that R22 gives the highest turbine work output and cycle efficiency, while RC318 gives the lowest. Increasing the turbine inlet temperature, the cycle efficiency using R22 tends to increase while RC318 tends to decrease. RC318 has the lowest latent heat of vaporization thus vaporizes under relatively very low evaporator heat supply.

REFERENCES

1. Yamamoto T, Furuhashi T, Arai N, Mori K, "Design and Testing Of The Organic Rankine Cycle", Energy Journal, vol. 26, pp. 239-251, 2001.
2. Madhawa HD, Mihajlo G, William MW, Ikegami Y, "Optimum Design Criteria for an Organic Rankine Cycle Using Low-Temperature Geothermal Heat Sources", Energy Journal, vol. 32, pp 1698-1706, 2007.
3. Donghong W, Xuesheng L, Zhen L, Jianming G, "Performance Analysis And Optimization Of Organic Rankine Cycle (ORC) For Waste Heat Recovery", Energy Conversion and Management Journal, vol. 48, pp. 1113-1119, 2007.
4. Pedro JM, Louay MC, Kalyan S, Chandramohan S, "An Examination of Regenerative Organic Rankine Cycle Using Dry Fluid", Applied Thermal Engineering Journal, vol. 28, pp. 998-1007, 2008.
5. Aleksandra BG, Wladyslaw N, "Maximising The Working Fluid Flow As A Way Of Increasing Power Output Of Geothermal Power Plant", Applied Thermal Engineering Journal, vol. 27, pp. 2074-2078, 2007.
6. Bo-Tau Liu, Kuo-Hasiang C, Chi-Chuan W., "Effect of Working Fluids on Organic Rankine Cycle for Waste Heat Recovery", Journal Energy, vol. 29, no.4, pp. 1207-1217, 2004.
7. Saitoh T, Yamada N, Wakashima S, "Solar Rankine Cycle System Using Scroll Expander", Journal of Environment and Engineering, vol. 2, no. 4, pp. 708-719, 2007.
8. Andrian B. Advanced Engineering Thermodynamics, New York; John Wiley & Sons, 1997.

9. Arne J., Bjarne D.R., Morten J.S., Simon E.A., CoolPack ver 1.46, Dept. of Energy Eng., Technical University of Denmark (DTU), May 2001.
10. National Institute of Standards and Technology (NIST) Chemistry WebBook, Standard Reference Database, Reference Thermophysical Properties of Fluid System, US, 2011.